



## ADHESION ON WOOD

### CN9245, a water thinnable urethane acrylate

CN9245 is a **fast curing** tough resistant resin with **excellent abrasion resistance** and **adhesion to difficult surfaces**, its compatibility with water ensures a great improvement in adhesion onto many substrates.

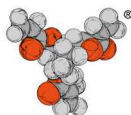
#### Product properties

Properties	Results
Reactivity, m/mn	30
Acetone swab, 12 $\mu$ , s	40
Pencil hardness, 100 $\mu$ , s	43
Flexibility, 100 $\mu$ on cylindrical mandrin	6
Viscosity, 25°C Pa.s	20

#### Starting point formulation

Product	Weight
CN9201	80
water	20
Irgacure 500	2

Formulation properties	
Viscosity	10.8 Pa.s @ 25°C
Adhesion, cross hatch on pine, mahogany, oak	0
Adhesion on intestons same species	excellent

**CN148, a flexible epoxyacrylate**

**CN148** is useful wherever you need an **improved adhesion for your primer**, with an **excellent cointest**. It can be used on many different wood species.

**Product properties**

Properties	Results
Reactivity, m/mn	33
Acetonswab, 12µ,s	20
Perso hardness, 100µ,s	265
Flexibility, 100µon cylindrical mandrin	3
Viscosity, 25°C Pa.s	60

Formulation for properties: CN148(100), Darocur 1173(4)  
Cure conditions for test: 5m/mn Fusion 120W/cm

**Starting point formulation**

Product	Weight
CN148	56.7
SR306	29.4
Talc	4.9
CaCO <sub>3</sub>	4.9
Darocur 1173	2.2
Irgacure 184	1.9

Formulation properties	
Viscosity	2000 mPas @ 25°C
Adhesion, cross hatch on pine, beech, mahogany, oak	0
Adhesion cointest on same species	excellent